

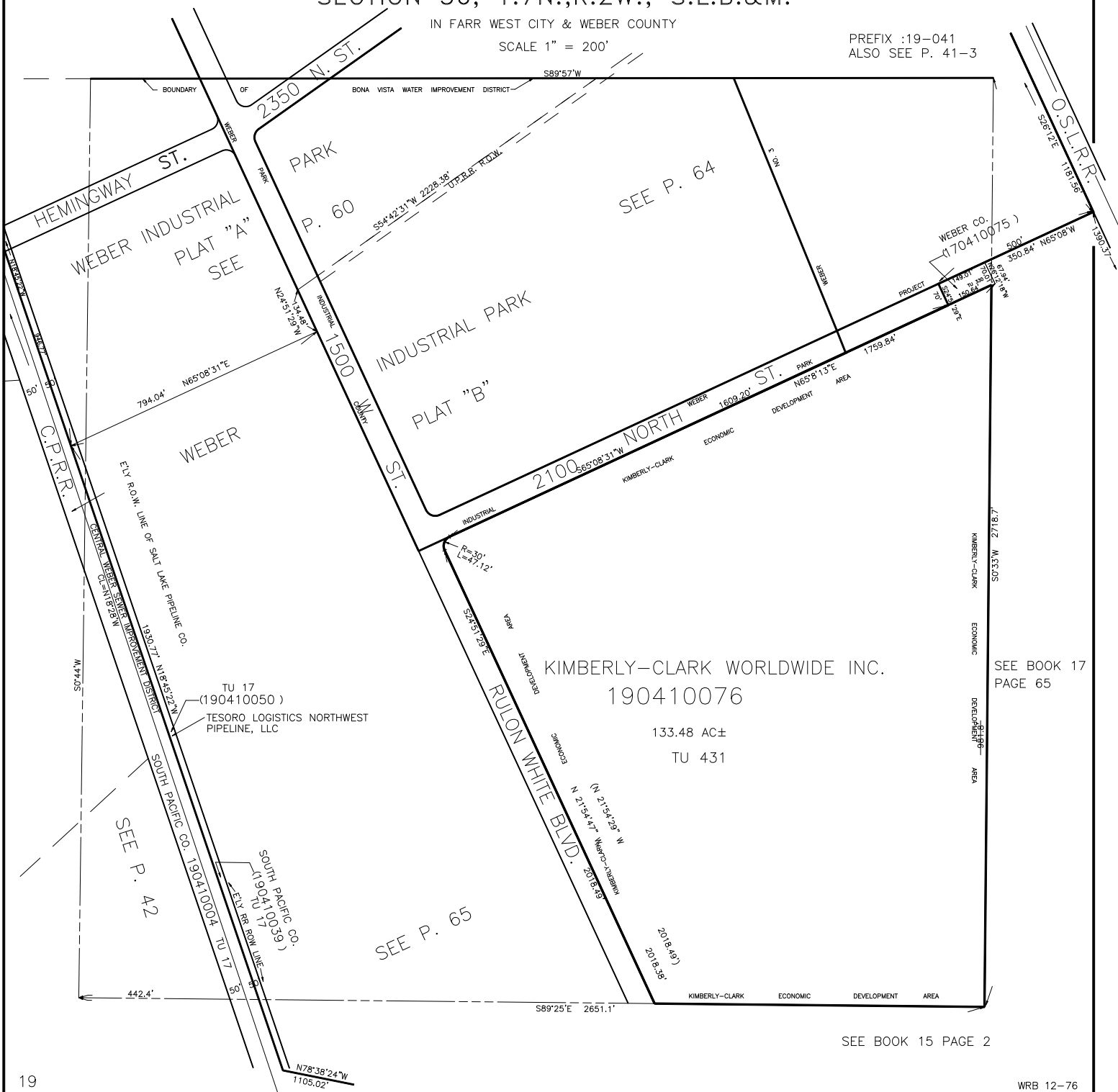
TAXING UNIT: 17, 431

S.E. 1/4
SECTION 36, T.7N.,R.2W., S.L.B.&M.

IN FARR WEST CITY & WEBER COUNTY

SCALE 1" = 200'

PREFIX :19-041
ALSO SEE P. 41-3



WEBER INDUSTRIAL
PLAT "A"
SEE

INDUSTRIAL PARK
PLAT "B"

KIMBERLY-CLARK WORLDWIDE INC.
190410076

133.48 AC±
TU 431

SEE BOOK 17
PAGE 65

SEE BOOK 15 PAGE 2